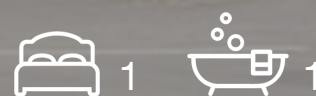




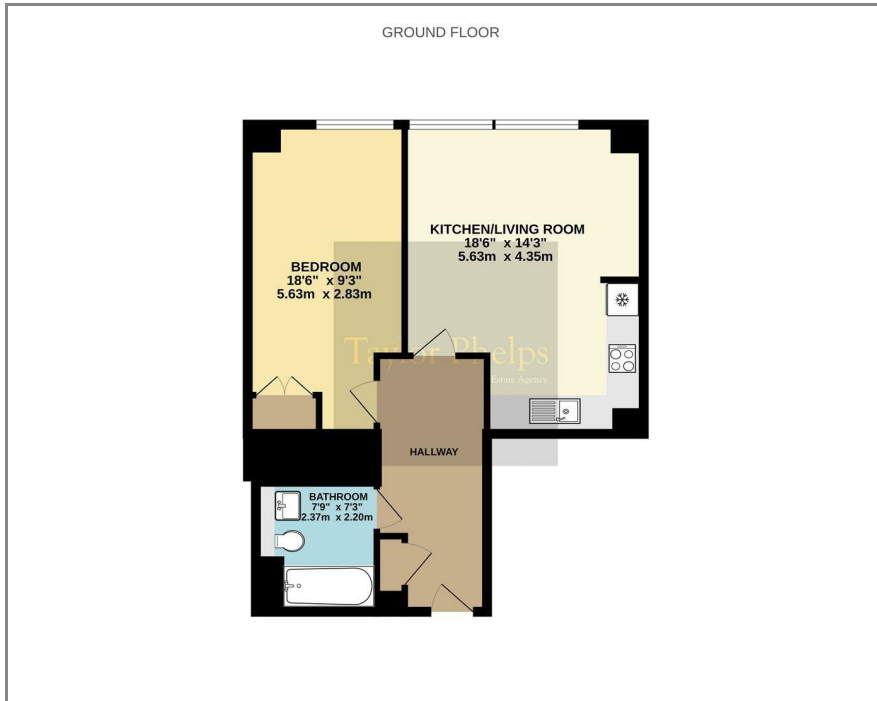
Flowers Way, Luton LU1 3GB  
£975 Per month



Taylor Phelps

Estate Agency

## Floor Plan



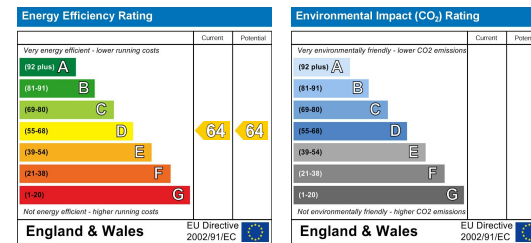
Taylor Phelps are pleased to offer modern one bedroom apartment positioned in the heart of the town centre, just a short walk to the local shops, restaurants and the train station. The property briefly comprises; entrance hall, utility cupboard, kitchen/living room, modern shower room and a separate one double bedroom with fitted wardrobes. The building itself includes a concierge service, underground car park with a space, lift and private landscaped communal court yard.



## Area Map



## Energy Efficiency Graph



These particulars, whilst believed to be accurate are set out as a general outline only for guidance and do not constitute any part of an offer or contract. Intending purchasers should not rely on them as statements of representation of fact, but must satisfy themselves by inspection or otherwise as to their accuracy. No person in this firm's employment has the authority to make or give any representation or warranty in respect of the property.

01920 459000

hello@taylorphelps.co.uk

5 Frenchs Yard, Amwell End, Ware, Hertfordshire, SG12 9HP

[www.taylorphelps.co.uk](http://www.taylorphelps.co.uk)

